

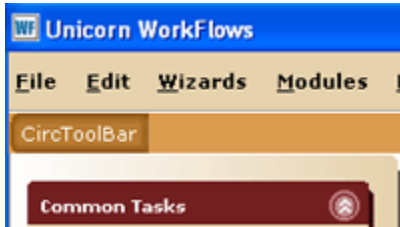
# WorkFlows JavaClient Startup

## Download and Installation

Download the JavaClient at: <http://intranet.int.neisd.net/libr/Manual/toc.htm>

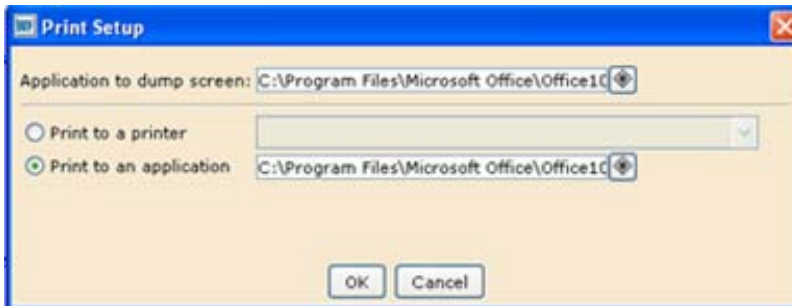
You will need your campus CNC to assist installing or call John to assist. When installing, agree to all defaults. You will only need to provide the IP address (library.int.neisd.net) during the installation.

## Update Toolbar



- Once WorkFlows is open, find the CircToolBar button and click on it. This will update the toolbar contents with the Reports group.

## Set Printer Defaults

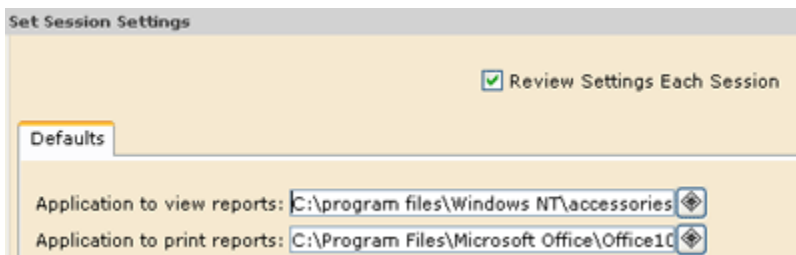


- Point **Application to dump screen** to:  
C:\Program Files\Microsoft Office\Office10\Winword
- Point **Print to an application** to:  
C:\Program Files\Microsoft Office\Office10\Winword

### Definitions:

1. **Application to dump screen** – Activates when going to File → Print Screen.
2. **Print to an application** – Activates when clicking on the print wizard in the toolbar or print helper inside a wizard.

## Set Report Defaults



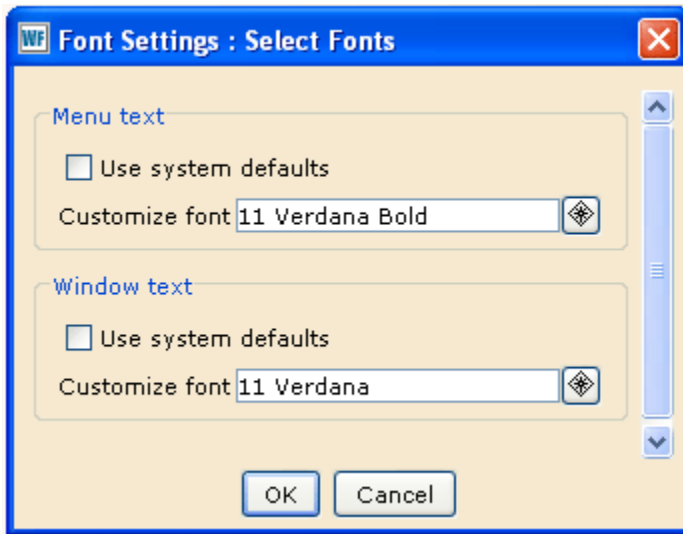
- Point **Application to view reports** to:  
C:\Program Files\Windows NT\accessories\Wordpad
- Point **Application to print reports** to:  
C:\Program Files\Microsoft Office\Office10\Winword
- Uncheck **Review Settings..** before closing

# WorkFlows JavaClient Startup

## Desktop Preferences

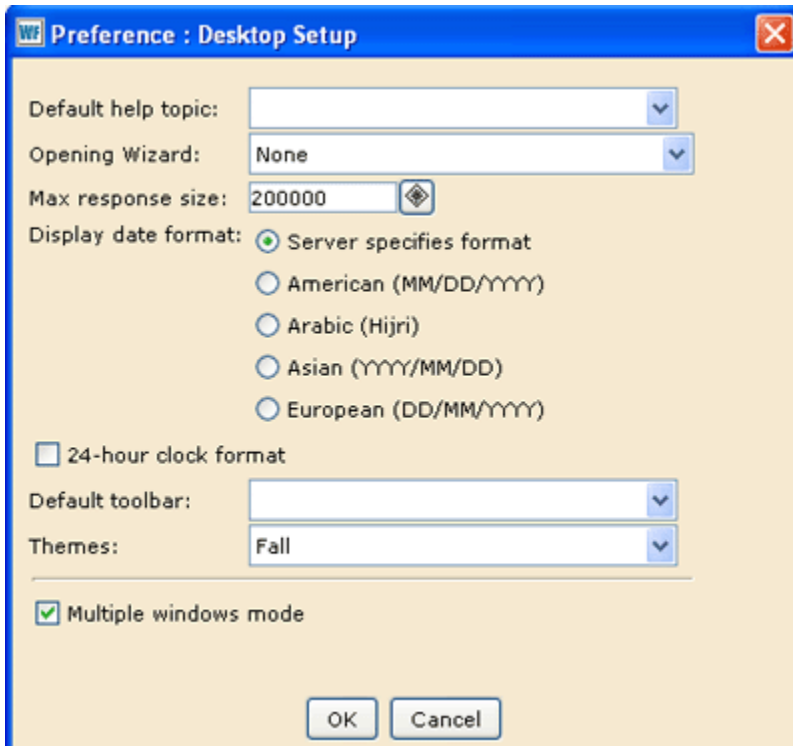
In the menu, select Preference → Desktop to get started.

## Font Settings



- Menu and Window Text – Adjust either of these to whatever is most comfortable. The defaults are shown here.

## Desktop Setup



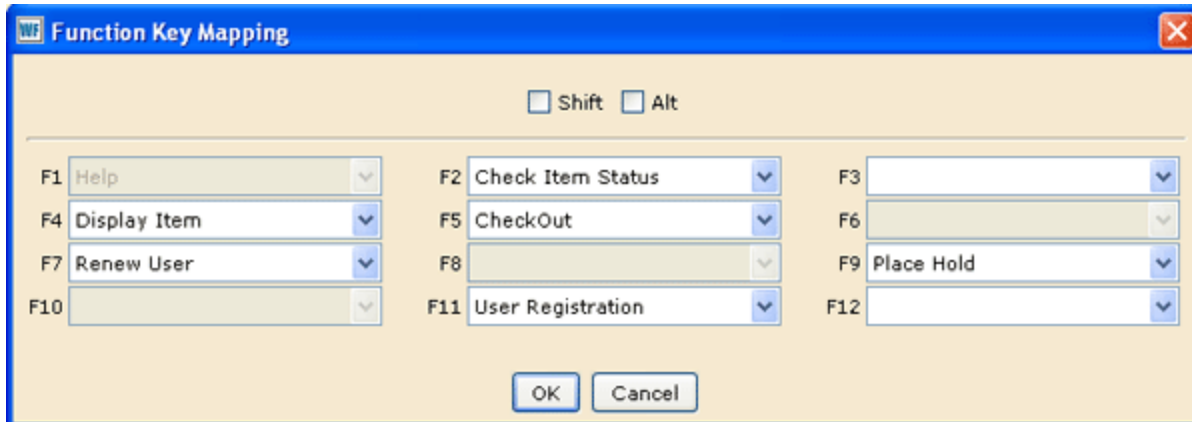
- **Opening Wizard** (optional) – Could be used to start the most commonly used wizard on startup.
- **Themes** – Many options available.
- **Multiple windows mode** (optional) – When checked on, allows multiple windows to be open. This can be useful if. If selected, shutdown and restart JavaClient. Notice that a Window option appears in the toolbar. This can be set in different modes, depending on your preference.

# WorkFlows JavaClient Startup

## Function Key Mapping

Preference → Desktop → Current Toolbar → Function Key Mapping

Setting the function keys (F1, F2, etc.) can be very helpful. Select a wizard in the drop down to assign it to a function key. If either Shift or Alt are checked, then the user will have to hold down the Shift or Alt key while pressing the function key.



## Saving Settings

Once all these settings are created, they are saved in a Sirsi folder in the current user's Documents and Settings folder.

For example when I login to Novell/ZenWorks, the path to my settings is:

C:\Documents and Settings\jahlen\Sirsi

The Sirsi folder can be copied and pasted into another user's folder so that it would not be necessary to recreate these settings under that user's Novell login.